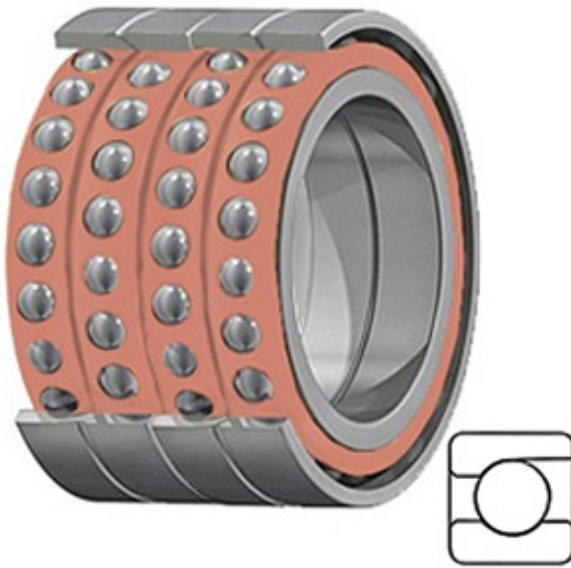




FUYR BEARING CO.,LTD.

7.874 Inch | 200 Millimeter x 11.024 Inch | 280 Millimeter x 5.984 Inch | 152 Millimeter TIMKEN 2MM9340WI QUH Precision Ball Bearings



Bearing No. 2MM9340WI QUH

2MM9340WI QUH Bearing 2D drawings and 3D CAD models

Category	Precision Ball Bearings
Inventory	0.0
Manufacturer Name	TIMKEN
Minimum Buy Quantity	N/A
Weight	25.04
EAN	0087796328235
Product Group	B04270
Enclosure	Open
Precision Class	ABEC 7 ISO P4
Material - Ball	Steel
Number of Bearings	4 (1 Quadruplex Set)
Contact Angle	15 Degree
Preload	Heavy
Raceway Style	1 Rib Outer Ring
Cage Material	Phenolic
Rolling Element	Ball Bearing
Mounting Arrangement	Quadruplex-Universal
Flush Ground	Yes
Inch - Metric	Metric
Other Features	Single Row Angular Contact Super High Precision
Long Description	200MM Bore; 280MM Outside Diameter; 152MM Width; Open Enclosure; ABEC 7 ISO P4 Precision;



FUYR BEARING CO.,LTD.

	Steel Ball Material; 4 (1 Quadruplex Set) Bearings; 15 Degree Contact Angle; Phenolic Cage Material; 1 Rib O
Category	Precision Ball Bearings
UNSPSC	31171531
Harmonized Tariff Code	8482.10.50.28
Noun	Bearing
Keyword String	Angular Contact Ball
Manufacturer URL	http://www.timken.com
Manufacturer Item Number	2MM9340WI QUH
Weight / LBS	55.16
d	7.874 Inch 200 Millimeter
D	11.024 Inch 280 Millimeter
B	5.984 Inch 152 Millimeter