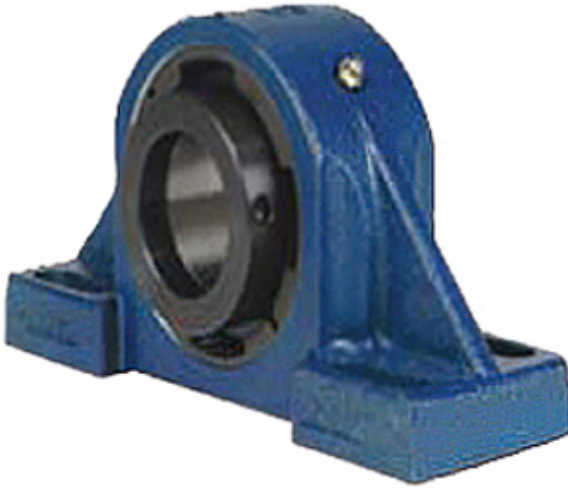




FUYR BEARING CO.,LTD.

2.5 Inch | 63.5 Millimeter x 2.87 Inch | 72.898
 Millimeter x 3.15 Inch | 80 Millimeter QM
 INDUSTRIES TAPG15K208SEM Pillow Block
 Bearings



Bearing No. TAPG15K208SEM

TAPG15K208SEM Bearing 2D drawings and 3D CAD models

Category	Pillow Block Bearings
Inventory	0.0
Manufacturer Name	TIMKEN
Minimum Buy Quantity	N/A
Weight	10.896
EAN	0883450198318
Product Group	M06288
Number of Mounting Holes	4
Mounting Method	Tapered Adapter Sleeve
Housing Style	4 Bolt Pillow Block
Rolling Element	Spherical Roller Bearing
Housing Material	Cast Steel
Expansion / Non-expansion	Expansion
Mounting Bolts	5/8 Inch
Relubricatable	Yes
Insert Part Number	22215
Seals	Triple Lip Nitrile Rubber
Housing Configuration	1 Piece Solid
Inch - Metric	Inch
Other Features	Double Row Extreme Duty SN Style
Long Description	4 Bolt Pillow Block; 2-1/2" Bore; 3.15" Base to Center Height; Tapered Adapter Sleeve Mount; Spherical



FUYR BEARING CO.,LTD.

	Roller Bearing; 7.94" Minimum Bolt Spacing; 9.69" Bolt Spacing Maximum; Relub
Category	Pillow Block
UNSPSC	31171511
Harmonized Tariff Code	8483.20.40.80
Noun	Bearing
Keyword String	Pillow Block
Manufacturer URL	http://www.qmbearings.com
Manufacturer Item Number	TAPG15K208SEM
Weight / LBS	29
d	2.5 Inch 63.5 Millimeter
Bolt Spacing Maximum	9.69 Inch 246.126Millimeter
Nominal Bolt Center to Center	8.8 Inch 223 Millimeter
Bolt Spacing Minimum	7.94 Inch 201.676Millimeter
B	3.15 Inch 80 Millimeter
D	2.87 Inch 72.898 Millimeter
Actual Bolt Center to Center	0 Inch 0Millimeter