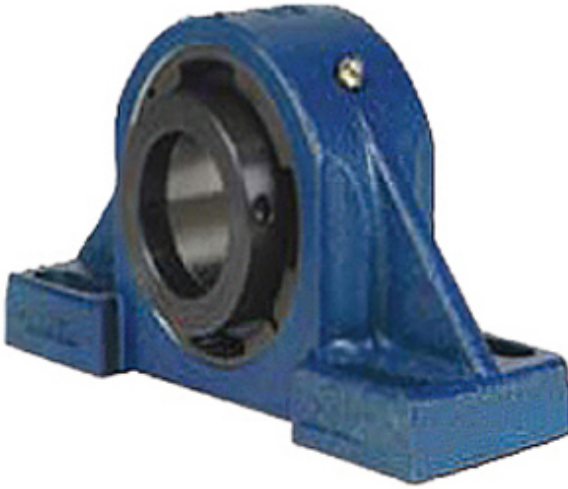




FUYR BEARING CO.,LTD.



3.938 Inch | 100.025 Millimeter x 4.59 Inch |
 116.586 Millimeter x 4.25 Inch | 107.95 Millimeter
 QM INDUSTRIES QAPF20A315SB Pillow Block
 Bearings

Bearing No. QAPF20A315SB

QAPF20A315SB Bearing 2D drawings and 3D CAD models

| | |
|---------------------------|---|
| Category | Pillow Block Bearings |
| Inventory | 0.0 |
| Manufacturer Name | TIMKEN |
| Minimum Buy Quantity | N/A |
| Weight | 25.878 |
| EAN | 0883450046701 |
| Product Group | M06288 |
| Number of Mounting Holes | 4 |
| Mounting Method | Concentric Collar |
| Housing Style | 4 Bolt Pillow Block |
| Rolling Element | Spherical Roller Bearing |
| Housing Material | Cast Steel |
| Expansion / Non-expansion | Non-expansion |
| Mounting Bolts | 3/4 Inch |
| Relubricatable | Yes |
| Insert Part Number | 22220 |
| Seals | Double Lip Nitrile Rubber |
| Housing Configuration | 1 Piece Solid |
| Inch - Metric | Inch |
| Other Features | Double Row Single Collar With Set Screw |
| Long Description | 4 Bolt Pillow Block; 3-15/16" Bore; 4-1/4" Base to Center Height; Concentric Collar Mount; |



FUYR BEARING CO.,LTD.

| | |
|----------------------------------|--|
| | Spherical Roller Bearing; 10-7/8" Minimum Bolt Spacing; 13.38" Bolt Spacing Maximum; Relu |
| Category | Pillow Block |
| UNSPSC | 31171511 |
| Harmonized Tariff Code | 8483.20.40.80 |
| Noun | Bearing |
| Keyword String | Pillow Block |
| Manufacturer URL | http://www.qmbearings.com |
| Manufacturer Item Number | QAPF20A315SB |
| Weight / LBS | 67 |
| D | 4.59 Inch 116.586 Millimeter |
| d | 3.938 Inch 100.025 Millimeter |
| Nominal Bolt Center to Center | 12.5 Inch 317.5 Millimeter |
| Bolt Spacing Minimum | 10.875 Inch 276.225Millimeter |
| B | 4.25 Inch 107.95 Millimeter |
| Bolt Spacing Maximum | 13.38 Inch 339.852Millimeter |
| Actual Bolt Center to Center | 0 Inch 0Millimeter |